

NICHI

SKYMASTER
SH15B
B

**WITH IMPROVED SAFETY AND
MANEUVERABILITY, EQUIPPED
WITH CAPABILITY FOR NEW
TECHNOLOGY.**

**FOR CONTRIBUTION OF YOUR
SATISFIED WORK ENVIRONMENT...**



CENTRALIZED LOWER CONTROL SYSTEM

The function of Jack operation, Lower operation device and AMCS Monitor are available at the centralized lower control system. It's easier to access to each devices from ground position.



JOY STICK CONTROLLER with ENABLE SWITCH

Joy Stick will supply you a high efficiency and operability. Multiple operations, like Elevating + Extending of the boom can be accessed by one hand. In addition Enable Function prevents a accident by mis-operation.



SKYMASTER
SH15B3

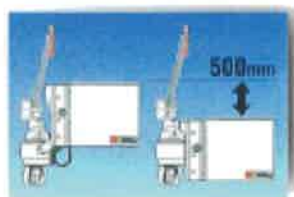
● OPTIONS ARE AVAILABLE FOR COMFORTABLE USAGE ●

BUCKET SLIDE

Bucket loading capacity is 200kg, the swing is controlled by hydraulic system.

Bucket slide type can move to raise and lower vertically by 500mm.

Bucket Slide Type



Operation System



Fixed Position Type



HYDRAULIC BOOSTER

A Variety of hydraulic tools for the ultra-high pressure.

Baloon Operation type



Operation device connector



HYDRAULIC WINCH

2 types of winch are available.

Hydraulic winch can operate hoisting, rotatating and elevating by each isolated lever.

Hydraulic System



Operation System



Manual System



OPTIONAL SAFETY DEVICES

Control Box Illumination



The Control Box Illumination can supply for both Upper and Lower to light up the controll panel in the dark.

FRP Tool Box



The FRP tool box is for hanging on the edge of the Bucket.
Inner dimension :
Approx.495 x 220 x 300(mm)

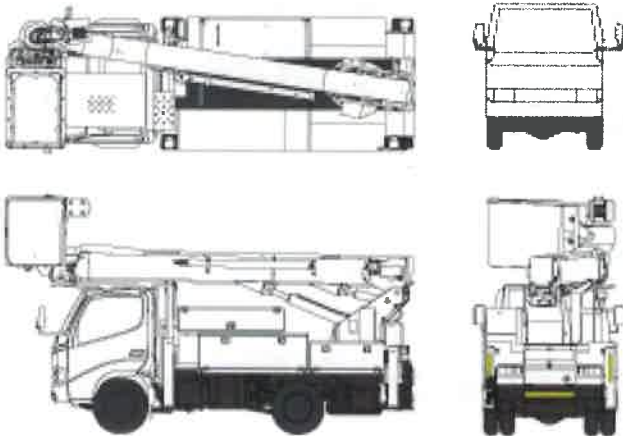
Jack Marker Lamp



The Jack Marker Lamp is installed on each jack and goes on when the boom is stowed on the boom reel and blinks when the boom is raised from the boom reel

SKYMASTER SH15B

SPECIFICATIONS

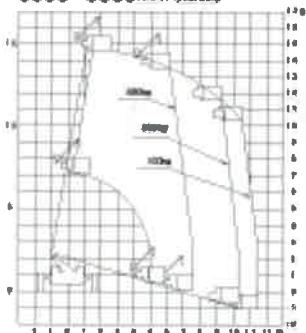


SH15B_BAE_2FH

Work Range Diagram (with Manual Winch, Fixed Bucket)

Outriggers Width (Max)

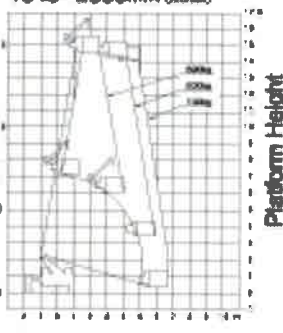
3300~3350mm (closed)
3300~3600mm (outree)



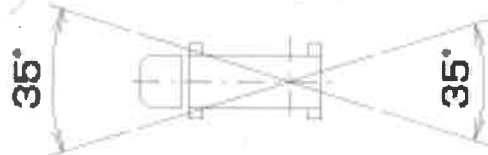
Working Radius

Outriggers Width (Min)

1710~2200mm (closed)
1840~2300mm (outree)



Working Radius



NICHI
CORPORATION

1152 RYOKE AGEO SAITAMA
362-8550

MODEL	SH15B
LIVE LINE WORK APPARATUS	Between bucket liner & ground with 3 rd Boom extend by 0.5m for 35 kv line voltage
LINE VOLTAGE	35kv
BUCKET	
RATED LOAD	200kg or two persons
MAX. FLOOR HEIGHT	14.6m (15.1m with optional bucket slide)
MAX. OUTREACH	11.8m with outrigger fully extended and the bucket load with 100kg.
MATERIAL	FRP
WITHSTAND VOLTAGE	20kv/5min.
INNER DIMENSION	0.73 x 1.05 x 0.9 (m) / (L x W x H)
BUCKET ROTATION	L:100 deg, R:100 deg.
BUCKET LINER	
MATERIAL	Polyethylene
WITHSTAND VOLTAGE	20kv/5min.
INNER DIMENSION	0.68 x 1.01 x 0.9(m) / (L x W x H)
WINCH & SUB-BOOM	
HOISTING CAPACITY	490kg
HOISTING HEIGHT	16.5m (Elevation Angle: 60 deg.)
ROPE SPEED	35m / min.
BOOM	
THE 3rd BOOM MATERIAL	FRP
THE 3rd BOOM INSULATION	100kv/5min.
LENGTH	5.235 - 12.795(m)
EXTENSION SPEED	7.56m/33s(Up), 7.56m/25s(Down)
ELEVATION ANGLE	-16.5~81deg.
ELEVATION SPEED	-16.5~81deg./35s (Up) -16.5~81deg./30s (Down)
ROTATION ANGLE	360 degrees continuous
ROTATION SPEED	1.2rpm
OUTRIGGER	
Outrigger Width	1.71~3.35m
SAFETY DEVICES:	
Hydraulic Safety Devices (Relief valve, Pilot check valves on jack cylinders, Holding valves on Elevation and Extension cylinders, Bucket leveling system), Emergency Stop Switch, AMCS, AMCS monitor, Jack-boom interlock system, Pre-programmed cabin and toolbox avoidance system, Anchor for safety belt, Starting check-up switch, Joy Stick Lever with Enable function.	
OTHER DEVICES:	
Upper Hydraulic Outlet, Earth Real, Upper Battery Charging Device, Level Gage, Boom Automatic Stowage system, Engine Start-Stop Switch	
STANDARD ACCESSORIES:	
Jack Base (4pcs), Wheel Chock (4pcs), Working light,(1pc), Bucket Cover, Winch Cover, Standard-Tool set (1set)	
SPECIAL OPTIONS:	
Upper Booster, Control Panel Illumination, FRP Tool-box, Slide Bucket	